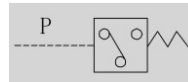


HIDROMOVE LPS PRESSURE SWITCH



Symbol

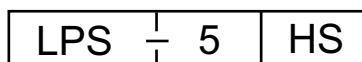


HIDROMOVE LPS series piston Pressure Switch are adopted micro-switch to control the start or stop of hydraulic components. It has characteristic of large pressure control range, easy operation and installation.

LPS Technical Data

Model	LPS
Operating Pressure (MPa)	05 - 31.5
Connection Threaded	G 1/4"
Max. Operating Voltage (V)	240
Switching Frequency (time/min.)	To 300
Weight (kg.)	0.8

LPS Codification

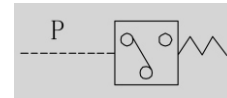


Pressure Range
 5: 10 - 50 Bar
 7.5: 30 - 75 Bar
 21: 14 - 210 Bar
 35: 17 - 315 Bar

HIDROMOVE AED40 PRESSURE SWITCH



Symbol

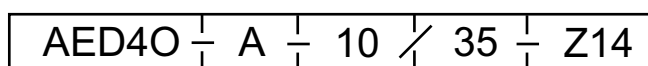


HIDROMOVE AED40 series piston Pressure Switch are adopted micro-switch to control the start or stop of hydraulic components. It has characteristic of large pressure control range, easy operation and installation.

AED40 Technical Data

Model	AED40
Operating Pressure (MPa)	5 - 35
Switching Frequency (time/min.)	120
Max. Operating Voltage (V)	240
Fluid temperature range (°C)	-20 to + 80
Weight (kg.)	0.7

AED40 Codification



Pressure Range
 5: 10 - 50 Bar
 10: 10 - 100 Bar
 35: 20 - 350 Bar

AED40 Installation Dimensions

